



# CORTADO

The Business Class of Mobile E-Mail

## Setting up Outlook 2007 for Cortado (POP3 and IMAP)

### Quick start guide

#### **Cortado: A Division of ThinPrint**

ThinPrint GmbH  
Alt-Moabit 91 a/b  
10559 Berlin  
Germany/Alemania

ThinPrint Pty. Ltd.  
L 10, 275 Alfred Street  
North Sydney / NSW / 2060  
Australia

ThinPrint, Inc.  
20525 Center Ridge Rd, Suite 630  
Cleveland, Ohio 44116  
USA/EEUU

ThinPrint, Inc.  
8703 Yates Drive, Suite 200  
Westminster, Colorado 80031  
USA/EEUU



E-mail: [info@cortado.com](mailto:info@cortado.com)  
Web: [www.cortado.com](http://www.cortado.com)  
Issued: July 12, 2007 (v01)



**© Copyright**

This document is the intellectual property of ThinPrint GmbH. This document may be copied in whole or in part, provided this Copyright notice is included in every copy.

**® Registered Trade Marks**

All hardware and software names mentioned in this document are the registered trademarks of their respective companies or should be regarded as such.

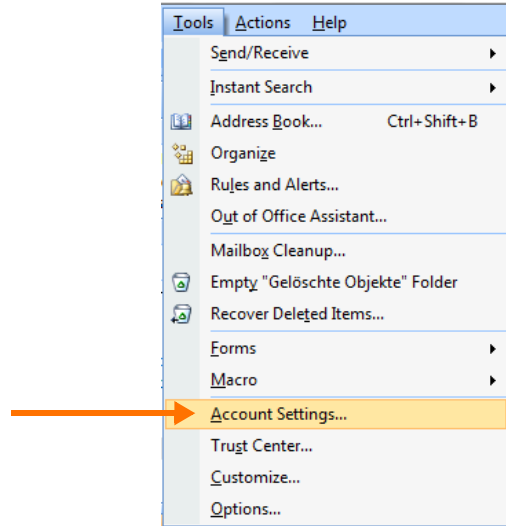


**Setting up Outlook 2007 for Cortado ..... 3**



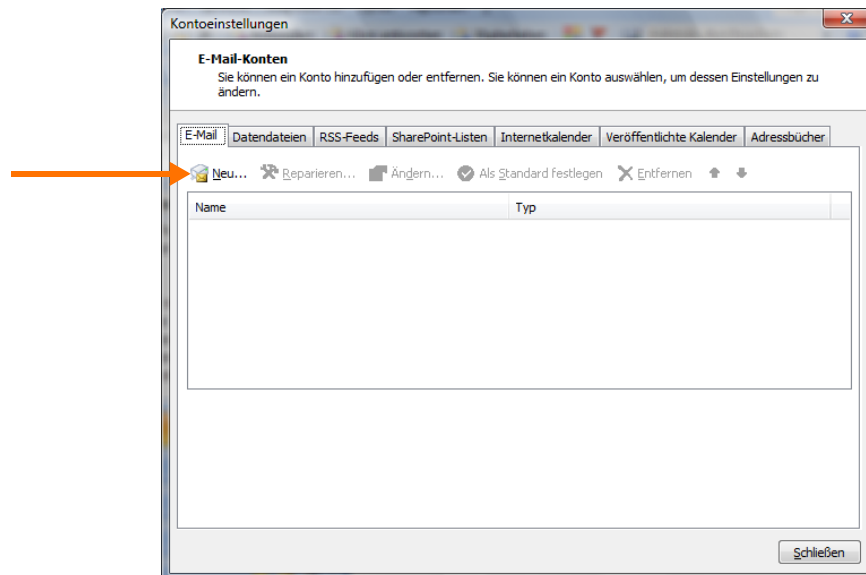
## Setting up Outlook 2007 for Cortado

1. Start Outlook 2007 and select TOOLS→ ACCOUNT SETTINGS from the menu bar (Illus. 1).



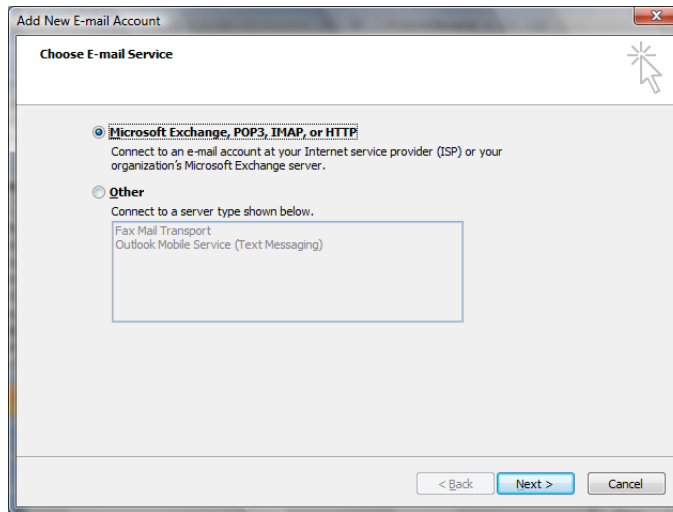
**Illus. 1** Selecting ACCOUNT SETTINGS

2. A new window opens. Select NEW (Illus. 2).



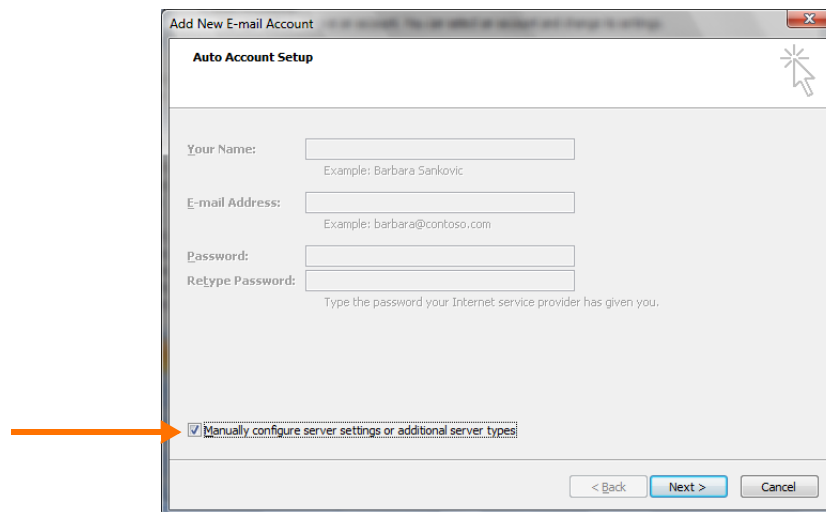
**Illus. 2** Setting up a new e-mail account

3. Leave the preset selection and click NEXT (Illus. 3).



**Illus. 3** Selecting an e-mail service

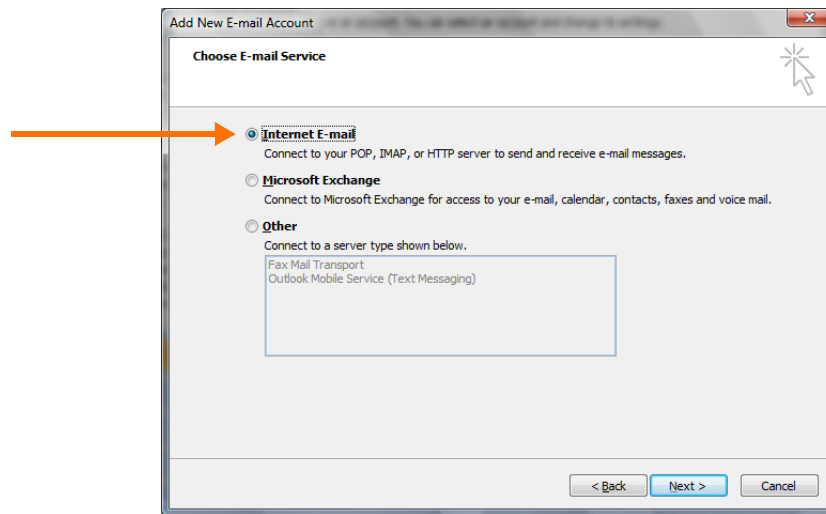
4. In the following window keep all fields empty and select MANUALLY CONFIGURE SERVER SETTINGS OR ADDITIONAL SERVER TYPES. Then click NEXT (Illus. 4).



**Illus. 4** Selecting manual server configuration

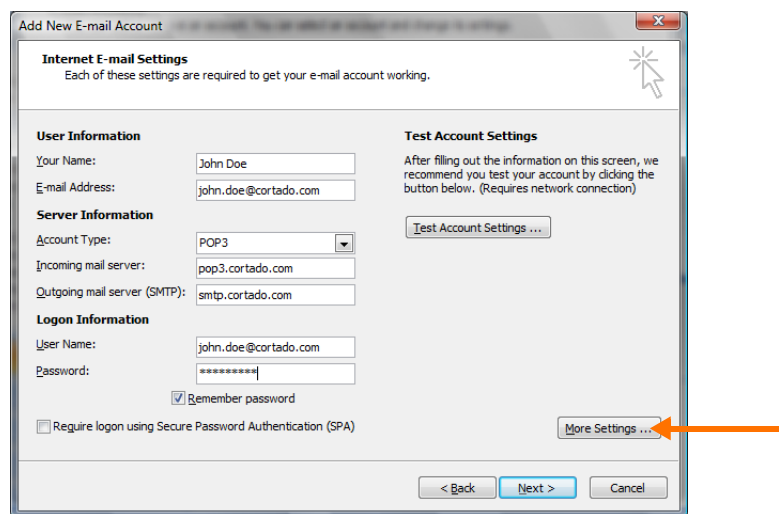


5. In the following window select INTERNET E-MAIL and click NEXT (Illus. 5).

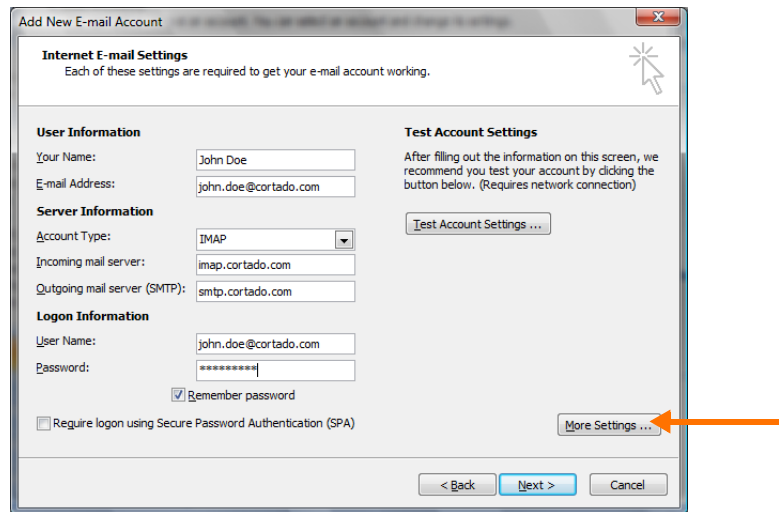


**Illus. 5** Selecting INTERNET E-MAIL

6. Now enter your Cortado user details and the respective server name – depending on the account type POP3 or IMAP (see examples in Illus. 6 and Illus. 7) – and click NEXT (Illus. 6).

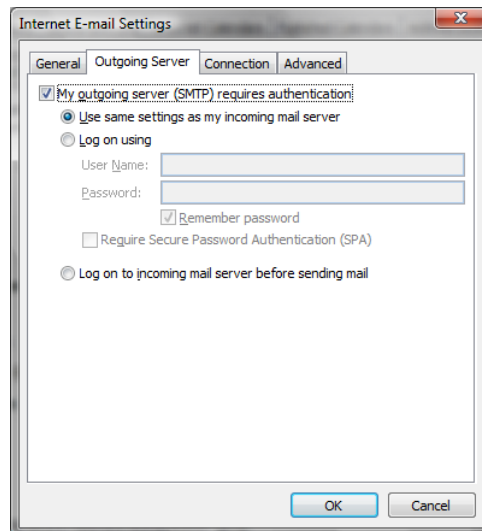


**Illus. 6** Internet E-mail settings for POP3



**Illus. 7** Internet E-mail settings for IMAP

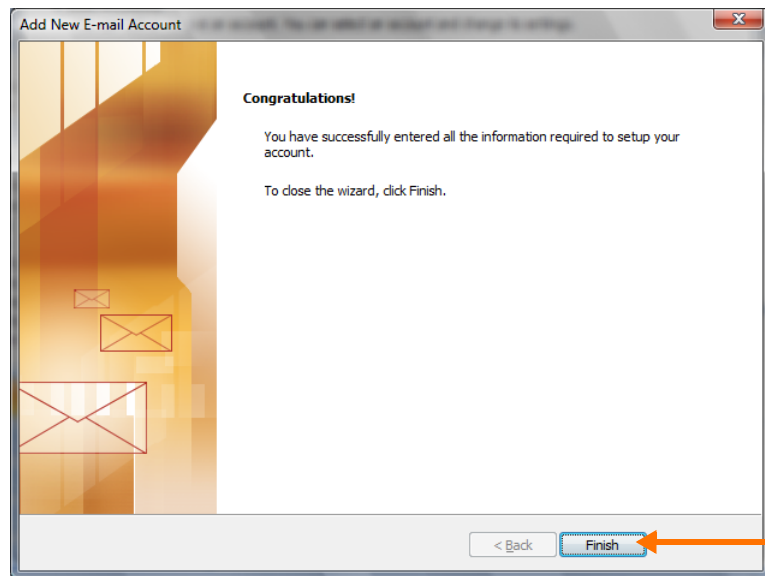
7. Now click MORE SETTINGS (see arrow in Illus. 6 and 7) and enable the option MY OUTGOING SERVER (SMTP) REQUIRES AUTHENTICATION on the OUTGOING SERVER tab (Illus. 8). Confirm with OK.



**Illus. 8** Setting up SMTP authentication

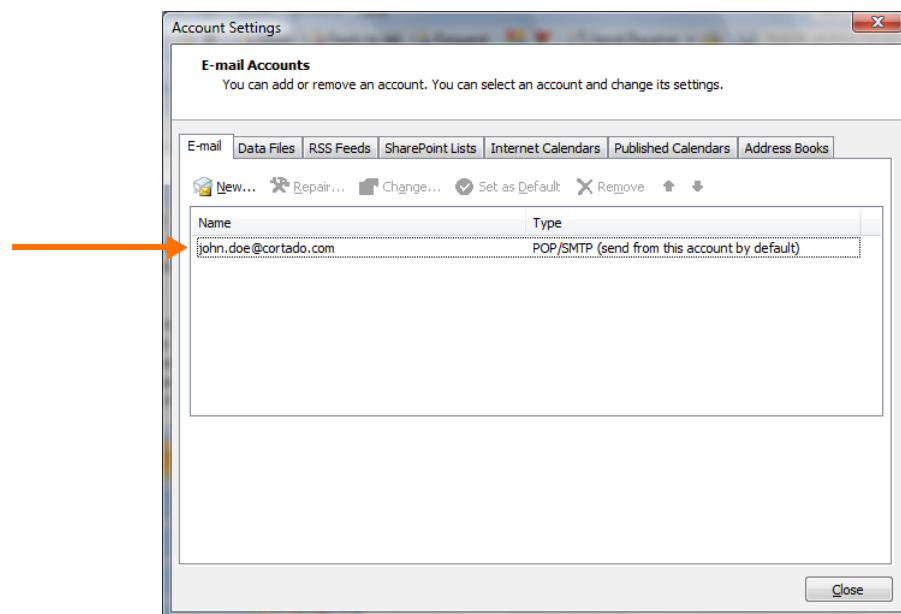


8. Click FINISH to complete the setup (Illus. 9).



**Illus. 9** Finishing the account setup

9. Now you can access your Cortado account via POP3 or IMAP (Illus. 10).



**Illus. 10** Active e-mail account