



CORTADO

The Business Class of Mobile Services

Setting up Outlook 2007 for Cortado

Quick Start

Cortado. A Division of ThinPrint

ThinPrint AG
Alt-Moabit 91 a/b
10559 Berlin
Germany/Alemania

ThinPrint Pty. Ltd.
L 10, 275 Alfred Street
North Sydney/NSW/2060
Australia

ThinPrint, Inc.
20006 Detroit Road, Suite 303
Cleveland, OH 44116
USA/EEUU

ThinPrint, Inc.
7600 Grandview Avenue, Suite 200
Denver, Colorado 80002
USA/EEUU



Email: info@cortado.com

www: www.cortado.com

Issued: October 12, 2009 (v04)



© Copyright

This document is the intellectual property of ThinPrint GmbH. This document may be copied in whole or in part, provided this Copyright notice is included in every copy.

® Registered Trade Marks

All hardware and software names mentioned in this document are the registered trademarks of their respective company or should be regarded as such.



Installing Microsoft Outlook 2007 3

Configuring Microsoft Outlook 2007 5



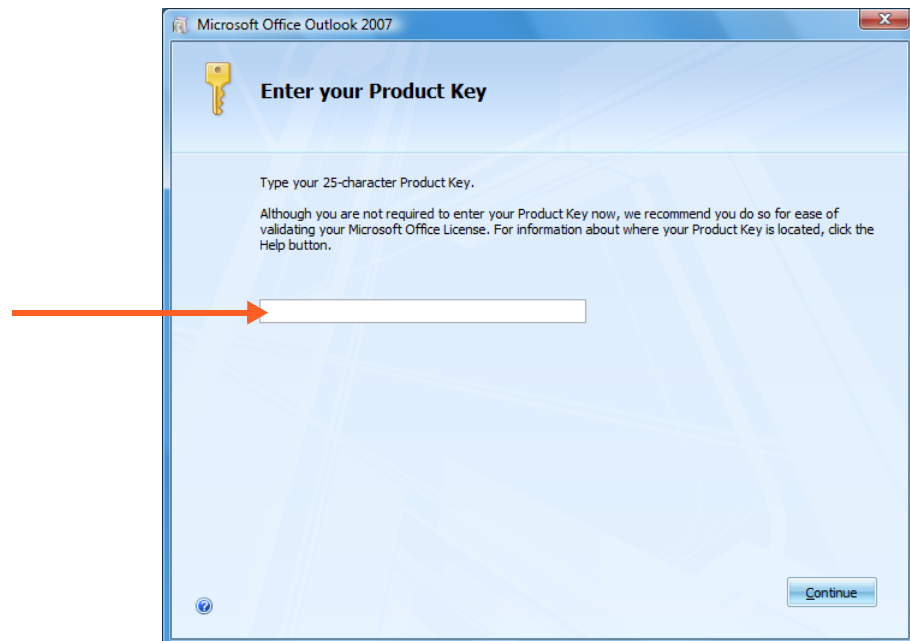
Installing Microsoft Outlook 2007

Install Microsoft Outlook 2007 by inserting the product CD and running the `setup.exe` found on the CD.

Tip! We recommend that you also install all current updates and service packs for Outlook 2007 once you have finished installing Microsoft Outlook 2007.

Now proceed with installation as described below.

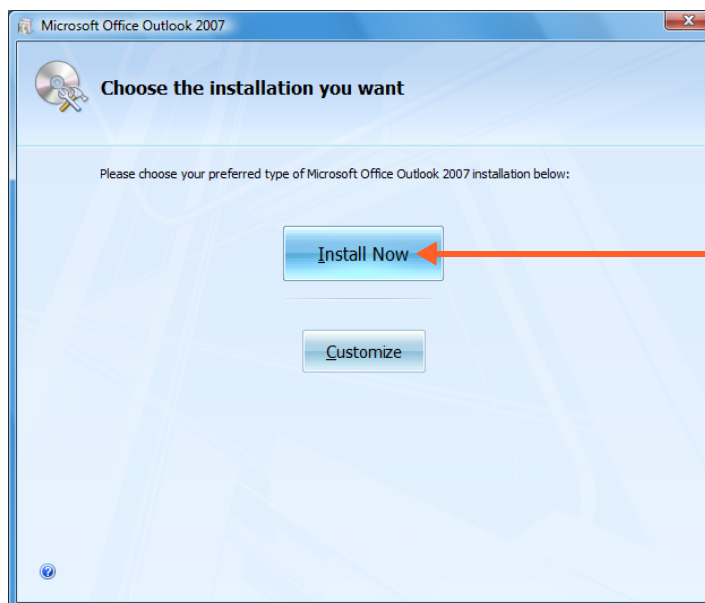
1. Enter the license key found on the CD in the appropriate box (Illus. 1) and click CONTINUE.



Illus. 1 Entering the license key

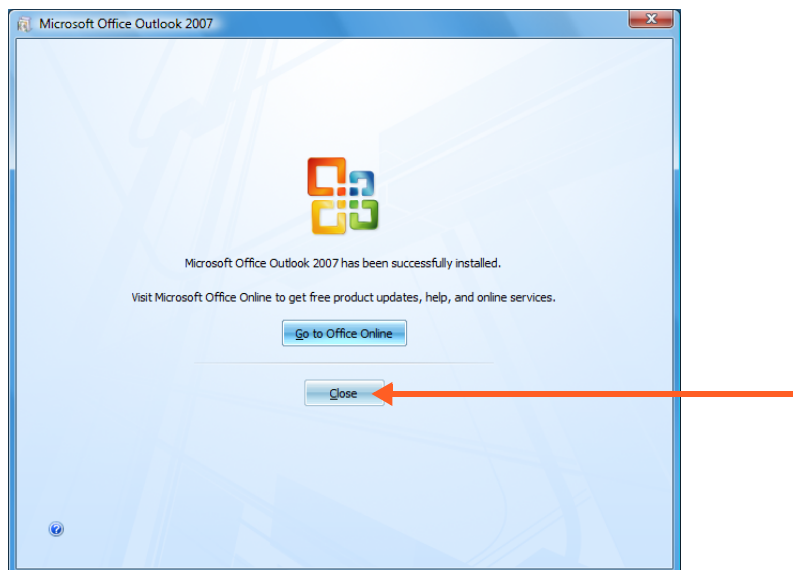


2. When you click **INSTALL NOW** in the next window (Illus. 2), installation of the Outlook client will begin.



Illus. 2 Starting installation

3. Click **CLOSE** (Illus. 3) to complete installation and begin with configuration.



Illus. 3 Completing installation



Configuring Microsoft Outlook 2007

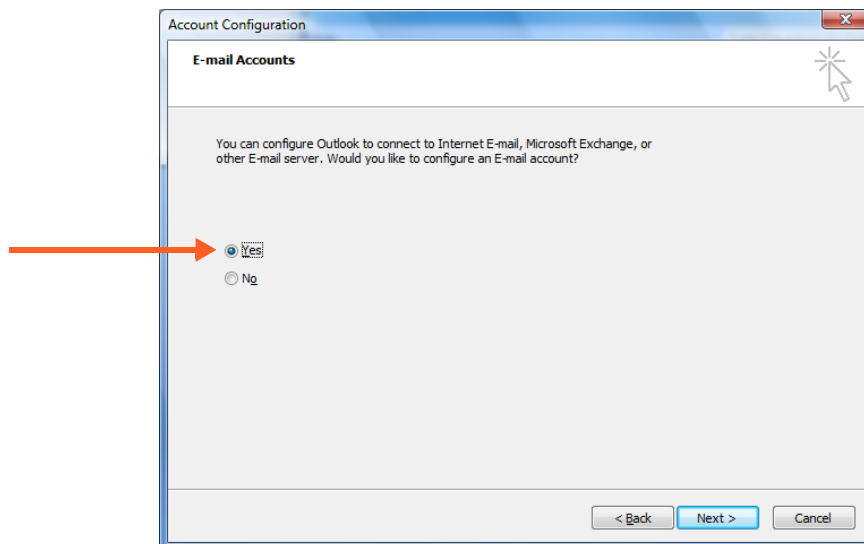
Start Microsoft Outlook 2007 via START → PROGRAMS and then configure the Outlook client as described in the next steps.

1. Confirm the welcome window by clicking NEXT (Illus. 4).



Illus. 4 Starting configuration

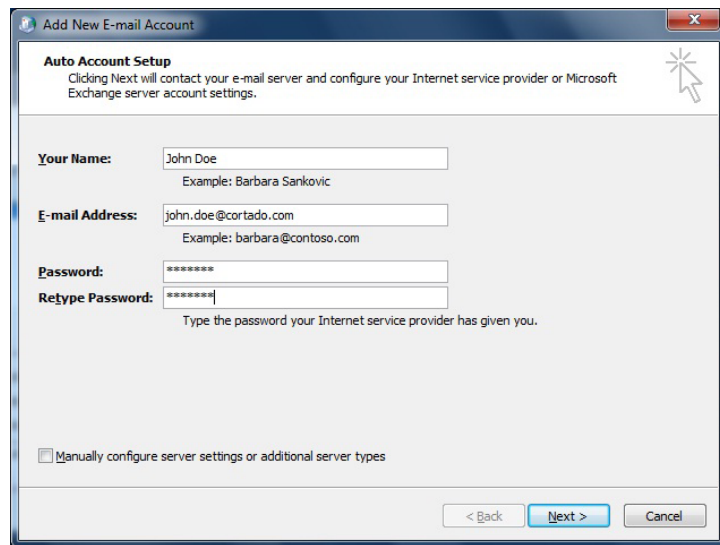
2. Confirm the ACCOUNT CONFIGURATION with YES and then click NEXT (Illus. 5).



Illus. 5 Setting up an e-mail account

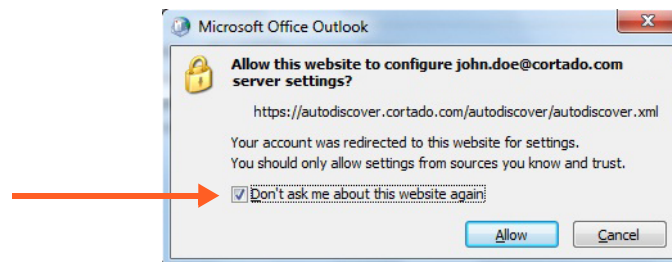


3. In the next window enter your name, your Cortado e-mail address and the password. Confirm with NEXT (Illus. 6).



Illus. 6 Setting up an e-mail account

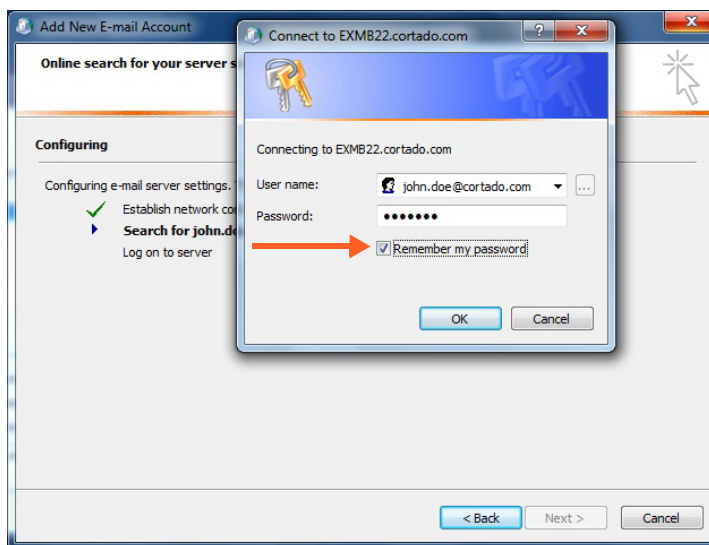
If a message is displayed, please enable “Don’t ask me about this website again” and confirm with ALLOW (Illus. 7).



Illus. 7 Security message

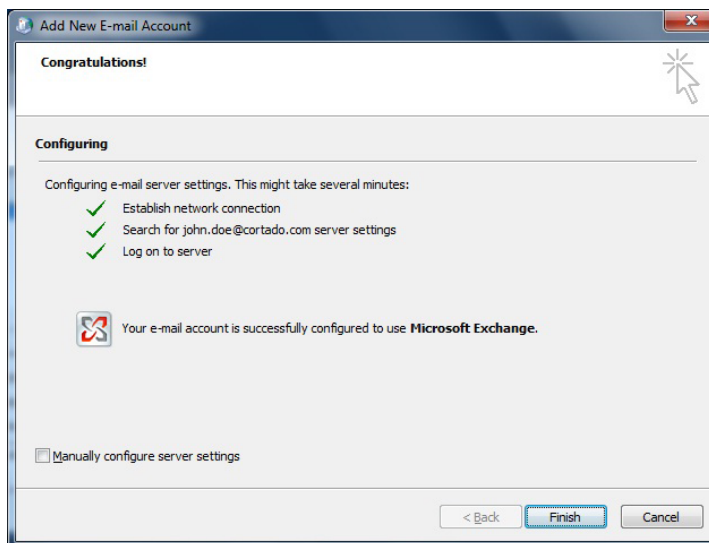


4. Enter your Cortado e-mail address and your password. Enable the REMEMBER MY PASSWORD option and click OK (Illus. 8).



Illus. 8 Adding new e-mail account

5. Click FINISH (Illus. 9) and start Outlook. Your e-mail account is successfully set up now.



Illus. 9 Account successfully configured