



# CORTADO

The Business Class of Mobile E-Mail

## Setting up Windows Mail for Cortado

### Quick start

#### **Cortado: A Division of ThinPrint**

ThinPrint GmbH  
Alt-Moabit 91 a/b  
10559 Berlin  
Germany/Alemania

ThinPrint Pty. Ltd.  
L 10, 275 Alfred Street  
North Sydney / NSW / 2060  
Australia

ThinPrint, Inc.  
20525 Center Ridge Rd, Suite 630  
Cleveland, Ohio 44116  
USA/EEUU

ThinPrint, Inc.  
8703 Yates Drive, Suite 200  
Westminster, Colorado 80031  
USA/EEUU



E-mail: [info@cortado.com](mailto:info@cortado.com)  
Web: [www.cortado.com](http://www.cortado.com)  
Issued: May 25, 2007 (v05)

**© Copyright**

This document is the intellectual property of ThinPrint GmbH. This document may be copied in whole or in part, provided this Copyright notice is included in every copy.

**® Registered Trade Marks**

All hardware and software names mentioned in this document are the registered trademarks of their respective company or should be regarded as such.



**Introduction** ..... 3

**Starting Mail Configuration** ..... 3

**Configuring the E-Mail Account** ..... 5

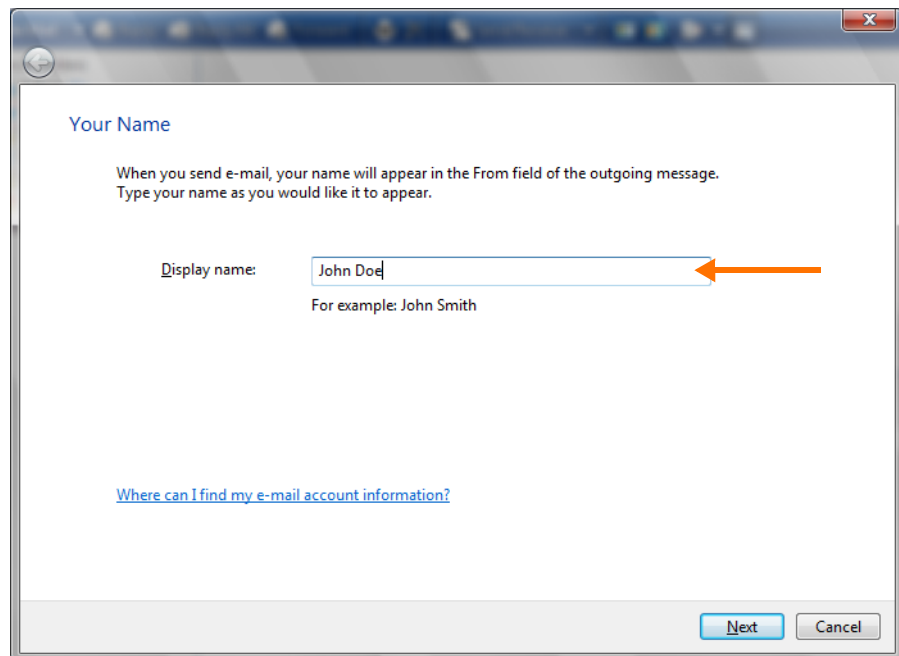


## Introduction

**Windows Mail** is the default e-mail program of **Windows Vista**. It represents an advancement of Outlook Express. Windows Mail offers a functionality very close to Outlook. But unlike Outlook, Windows Mail is a component of Windows Vista, it's available in all Vista versions.

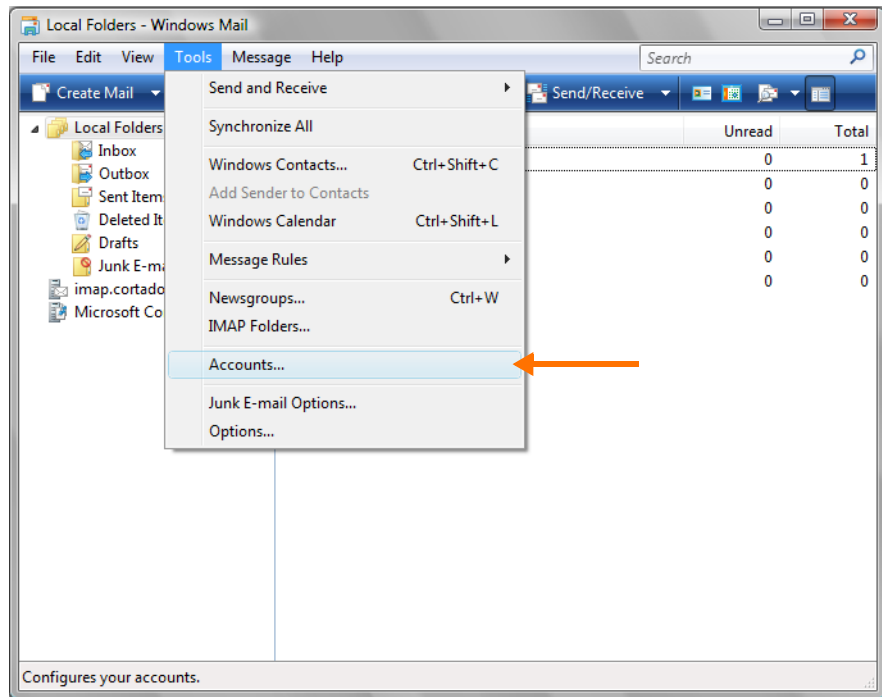
## Starting Mail Configuration

1. Select **START**→ **ALL PROGRAMS** and start **Windows Mail**. If you run Windows Mail for the first time, the Setup Assistant for new e-mail accounts opens. Enter your name (Illus. 1).



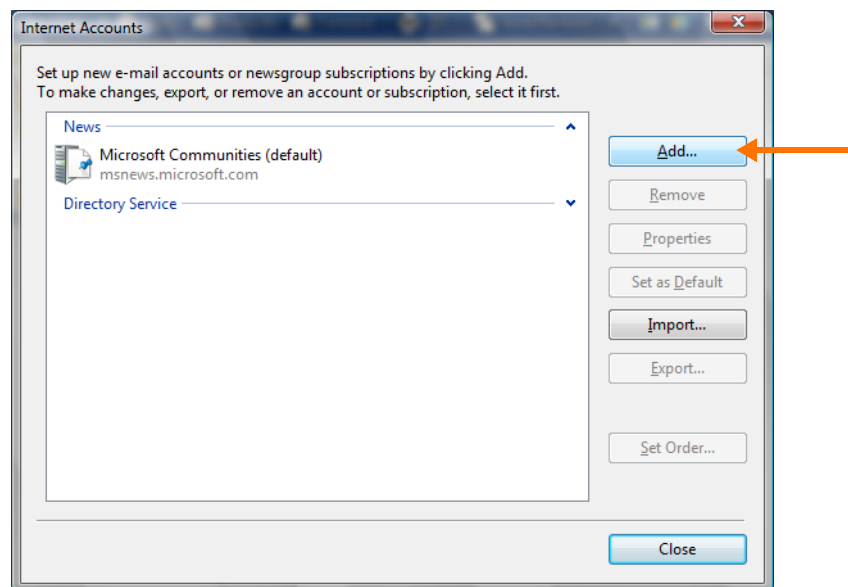
**Illus. 1** Setup Assistant for a new e-mail account: enter your name

2. Alternatively, select **TOOLS**→ **ACCOUNTS**, if you've already set up an e-mail account in Windows Mail (Illus. 2).



**Illus. 2** Select **TOOLS**→ **ACCOUNTS**, if an e-mail account already exists

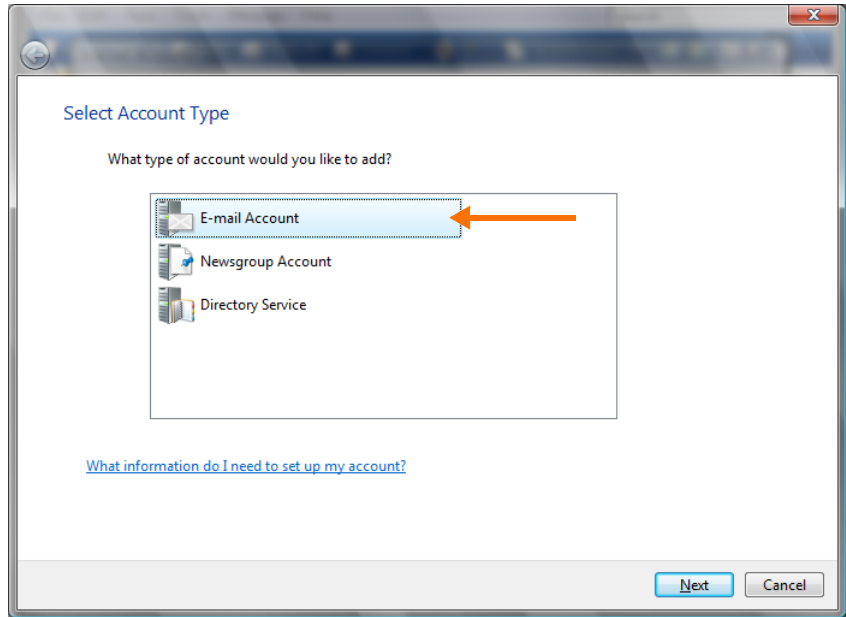
3. In the next window select **ADD** (Illus. 3).



**Illus. 3** Select **ADD**



4. In the next window select E-MAIL ACCOUNT, and click NEXT (Illus. 4).

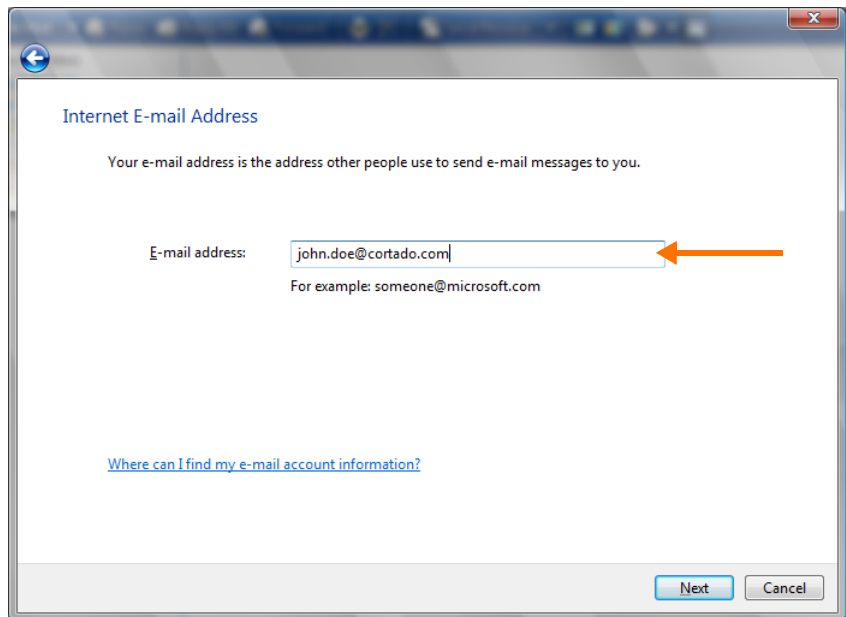


**Illus. 4** Select E-MAIL ACCOUNT

5. Now, the window in Illus. 1 ([Page 3](#)) opens. Here, enter your name and click NEXT.

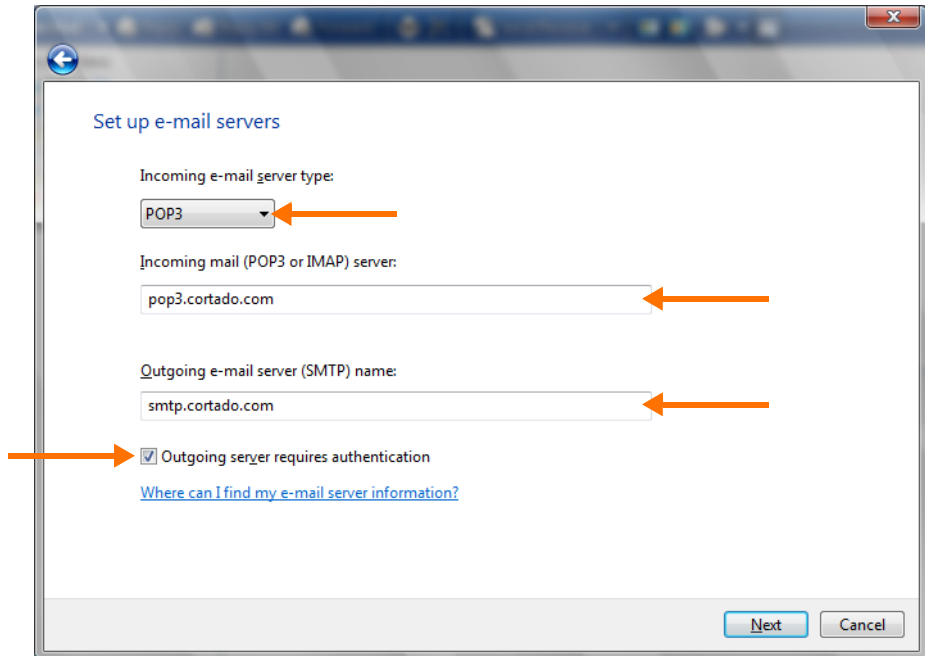
## Configuring the E-Mail Account

6. Now enter your Cortado e-mail address (Illus. 5). Click NEXT.

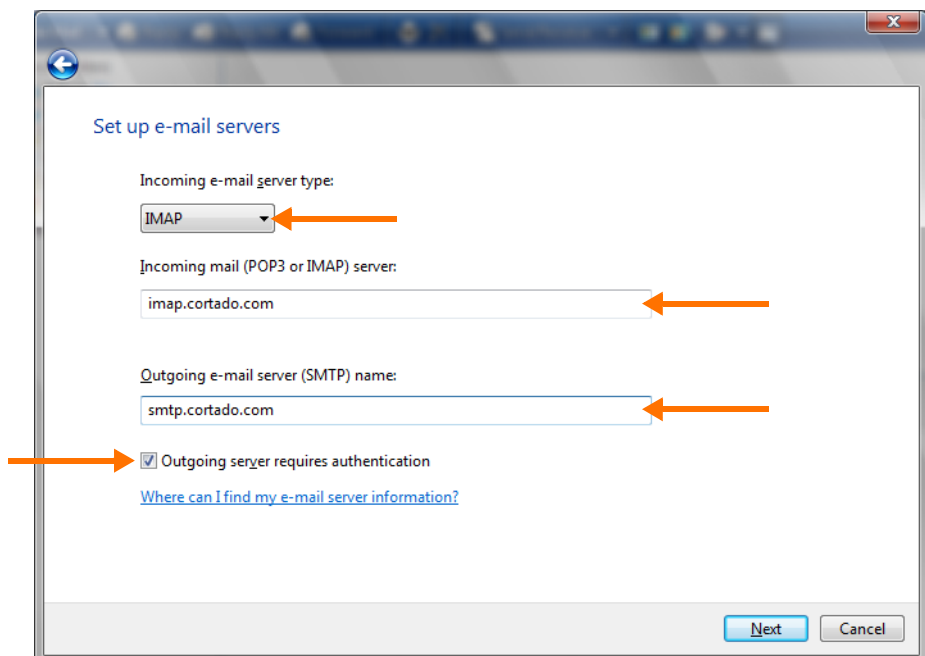


**Illus. 5** Enter your Cortado e-mail address

7. A new window opens. Select POP3 (Illus. 6) or IMAP (Illus. 7) as the incoming e-mail server type – depending on what access type you prefer. Enter the relevant Cortado server settings as shown below and enable OUTGOING SERVER REQUIRES AUTHENTICATION. Confirm your settings with NEXT.



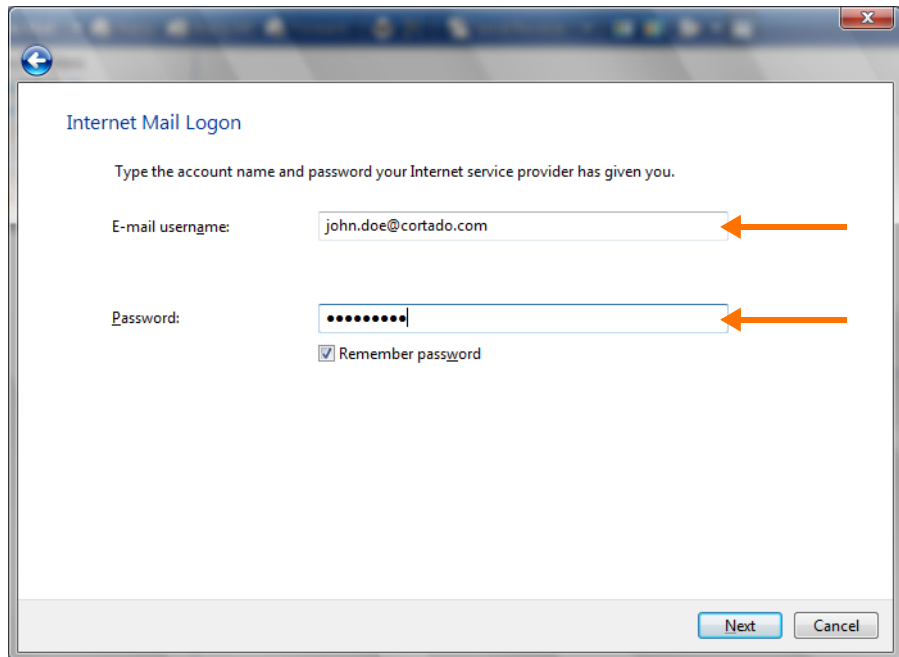
**Illus. 6** Select incoming e-mail server type (here: POP3), enter Cortado server settings, and enable OUTGOING SERVER REQUIRES AUTHENTICATION



**Illus. 7** Select incoming e-mail server type (here: IMAP), enter Cortado server settings, and enable OUTGOING SERVER REQUIRES AUTHENTICATION

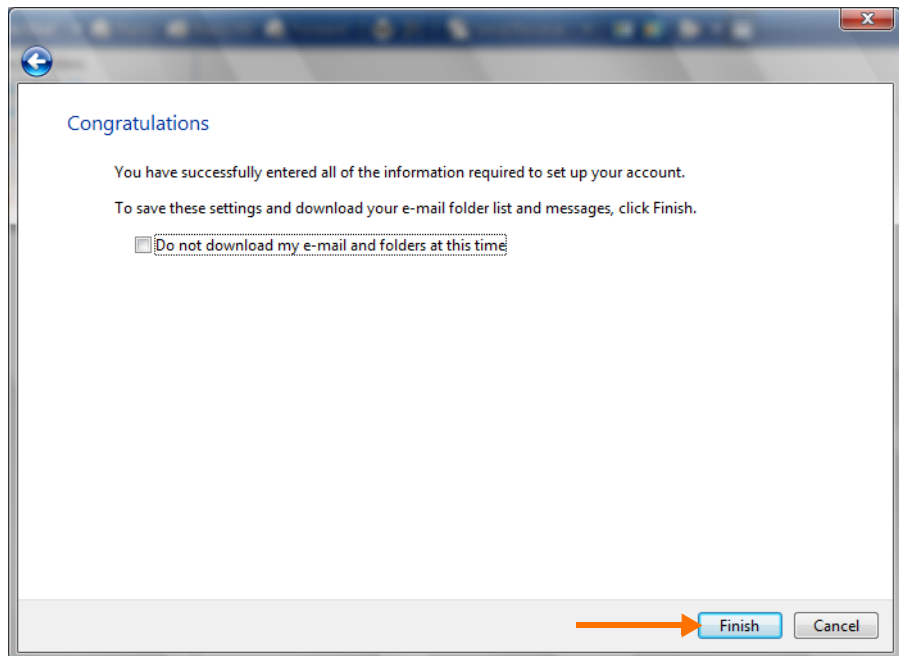


8. Now enter your Cortado login details (Illus. 8). Click NEXT.



**Illus. 8** Enter Cortado username and password

9. The Cortado e-mail account setup is completed. Click FINISH (Illus. 9) to close the Setup Assistant and to use your Cortado account with Windows Mail.



**Illus. 9** Finishing the setup